



Viewings

Viewings by arrangement only.
Call 0114 2666300 to make an appointment.

Vendors Comments

Add text here

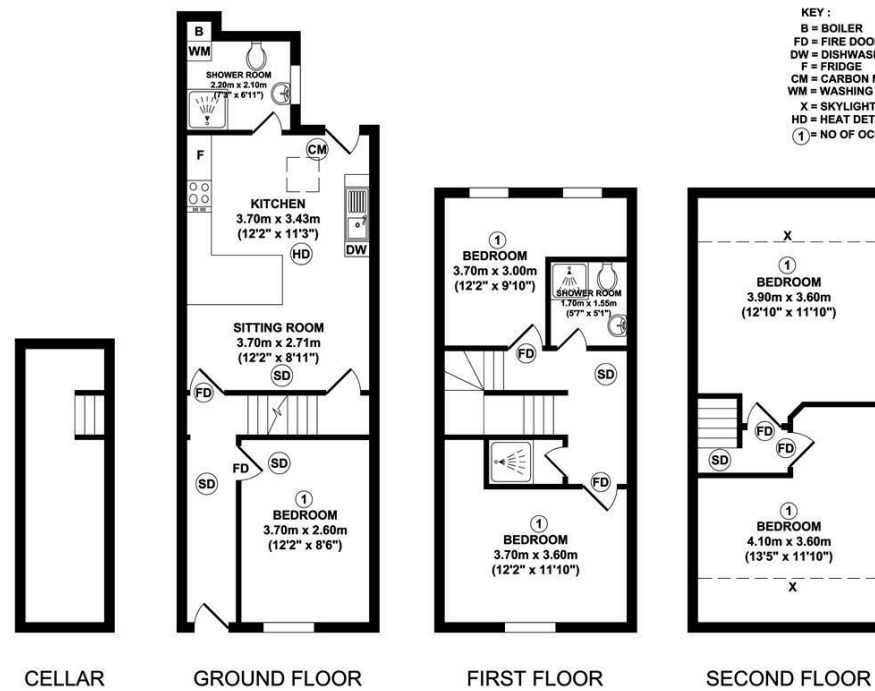
Energy Efficiency Rating		Current	Potential
Very energy efficient - lower running costs			
(92 plus) A			
(81-91) B			
(69-80) C			
(55-68) D			
(39-54) E			
(21-38) F			
(1-20) G			
Not energy efficient - higher running costs			
		72	82
England & Wales		EU Directive 2002/91/EC	



Tel: 0114 483 0038
E-mail: sales@jc-salesandlettings.com
Website: www.jc-salesandlettings.com



121 Pomona Street



Whilst every attempt has been made to ensure the accuracy of the floor plan contained here, measurements of doors, windows, rooms and any other items are approximate and no responsibility is taken for any error, omission, or mis-statement. This plan is for illustrative purposes only and should be used as such by any prospective purchaser.



121 Pomona Street, Sheffield, S11 8JN

£101 Per week

- Large open-plan kitchen/living area with modern extension
- Fully equipped kitchen
- Modern bedrooms with double beds and modern Ikea furniture
- Permit parking available
- Early viewing highly recommended
- Three showers (including one rainfall shower) and two toilets
- Spacious lounge with large wall-mounted TV
- Bright, clean décor and laminate flooring throughout
- Perfect for both Sheffield Hallam and University of Sheffield students
- EPC Grade C

121 Pomona Street, Sheffield S11 8JN

Looking for a stylish, spacious home right in the heart of Sheffield's student scene?

This fantastic 5-bedroom property is just 3 minutes from Collegiate Crescent Campus and only a 15-minute walk to Sheffield City Centre, perfect for both Sheffield Hallam and University of Sheffield students!

Large open-plan kitchen/living area with modern extension

Three showers (including one rainfall shower) and two toilets – no more morning queues!

Fully equipped kitchen with 2 freezers, large fridge, microwave, washing machine, tumble dryer & dishwasher

Spacious lounge with large wall-mounted TV.



Council Tax Band: B

